

MICROSURGICAL APPROACHES TO THE SKULL BASE

Surgical anatomy and techniques

Wednesday

7.45 AM

Registration and welcoming of participants

8.00 AM

THEORETICAL SESSION

Anterolateral approaches to the skull base

- Soft tissue dissection
- Frontotemporal orbitozygomatic approach
- Anterior clinoidectomy
- Mobilisation of the lateral wall of the cavernous sinus
- Keyhole approach

10.30 AM

PRACTICAL SESSION ON ANATOMICAL SPECIMENS

1.00 PM

Lunch at the Institute

2.00 PM

THEORETICAL SESSION

Craniocervical junction

- Far lateral transcondylar approach
- Anterolateral approach to the craniocervical junction and jugular foramen

3.45 PM

PRACTICAL SESSION ON ANATOMICAL SPECIMENS

7.00 PM

End of session

7.15 PM

Cheese and Wine Cocktail for attendees

Thursday

7.45 AM

Evaluation of the previous day

8.00 AM

THEORETICAL SESSION

Lateral transpetrosal approaches to the skull base

- Petrous bone anatomy
- Retrosigmoid approach
- Translabyrinthine approach
- Anterior petrosectomy
- Combined petrosectomy

10.30 AM

PRACTICAL SESSION ON ANATOMICAL SPECIMENS

1.00 PM

Lunch at the Institute

2.00 PM

SPECIAL LECTURES / GUEST SPEAKERS

3.00 PM

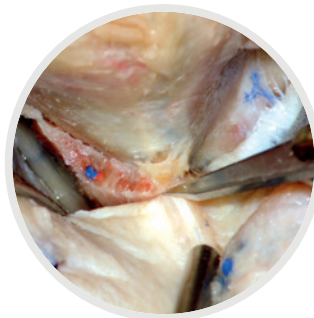
PRACTICAL SESSION ON ANATOMICAL SPECIMENS

7.00 PM

End of session

8.30 PM

Dinner in honor of participants



ENDOSCOPIC APPROACHES TO THE SKULL BASE

Friday

7.45 AM

Evaluation of the previous day

8.00 AM

THEORETICAL SESSION

Endoscopic endonasal approaches

- Endoscopic anatomy of the nasal cavities and sphenoid sinus
- Endoscopic anatomy of the ICA
- Endoscopic approach to the sella
- Tailored approach to the planum, clivus, cavernous sinus, petrous apex, orbital apex, pterygopalatine, infratemporal fossa, craniocervical junction
- Closure strategy

12.30 PM

Lunch at the Institute

1.30 PM

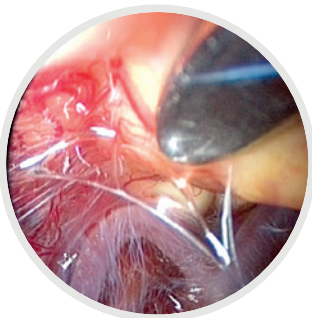
PRACTICAL SESSION ON ANATOMICAL SPECIMENS

6.30 PM

End of course

Delivery of certificates of attendance

This program may be subject to modifications.



Course objectives

To provide an overview of the complex anatomy of the skull base

To cover a broad spectrum of the skull base approaches and describe the technical steps of each specific approach

To discuss indications of skull base approaches and surgical strategies

To provide hands-on sessions on cadaveric specimens and improve skills

To become more familiar with endoscopic endonasal approaches

To understand the rationale and challenge of endoscopic endonasal approaches to the skull base

To allow case discussions between experts and trainees

Educational methods

Interactive theoretical and video sessions between faculty and course participants

Practical training on anatomical specimens